

GENESIS DISPLAY PROCESSOR



Genesis Display Processor

KEY FEATURES

- Applies viewing look-up table [LUT] to any HDSDI output.
- Facilitates on-set color management decisions.
 - allows log material to be viewed correctly on a Rec709 monitor.
 - LUTs can emulate post-production processes.
 - streamlines post-production communication.
- Can be used for one-light dailies.
- Emulates various film stocks.
- Custom LUT creation via intuitive tools such as curves and RGB controls, using ethernet connected computer.
- Supports multiple import and export formats such as .acv, .a3d, .lut, .csv, .txt.
- Frameline & test signal generation.
- Frame capture and download to dpx file.
- Wipe function between input and LUT corrected image.
- Dpx file upload for use as reference frame.

GENESIS DISPLAY PROCESSOR

2

On-Set Color Management

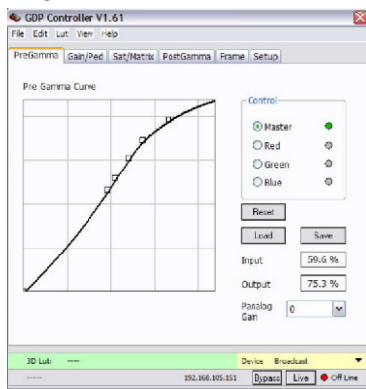
Panavision's Genesis Display Processor [GDP] helps bridge the gap between production and post, enabling better on-set visualization and communication of image intent to post.

The GDP applies preset or user-defined look up tables [LUTs] to the displayed image from any HDSDI output, for example to correct the raw log camera output, or to emulate a film stock or a post process. The viewed image is not recorded or embedded in the recorded image, so the "camera negative" remains intact. The image can be recorded on a separate recorder if desired, i.e. for dailies viewing, and custom LUTs can be exported as files and sent to post-production. The GDP supports many common file formats including .acv, .a3d, .lut, .csv, and .txt. Its native LUT format is .gbf.

A computer [Mac or PC] can be connected to the GDP via ethernet to create or manipulate LUTs, using familiar toolsets such as curves and RGB gains, peds and saturation.

A rack-mountable version called the Panavision Image Processor [PIP] can be used in a post-production setting to apply the same LUTs created on set, so that the colorist begins with a closer approximation to the final desired image.

When the final deliverables are of a known format, the GDP can be used to make DCI projector specific transfers, DVDs, streaming video, etc.



SPECIFICATIONS and FEATURES

- Applies viewing look-up table [LUT] to camera output -- for display only, not recorded.
- Facilitates on-set color management decisions.
 - view log material correctly on a Rec709 monitor.
 - LUTs can emulate post-production processes.
 - streamlines post-production communication.
- Can be used for dailies when scene to scene color correction is not required.
- Emulates various film stocks.
- Custom LUT creation via intuitive tools such as curves and RGB controls, using ethernet connected computer [Mac or PC].
- Supports multiple import and export formats such as .acv, .a3d, .lut, .csv, .txt.
- Single and dual-link HDSDI inputs and outputs. 4:2:2 or 4:4:4 input/output, including cross conversion.
- Wipe function between input and LUT corrected image.
- Scratchpad for LUT experimentation.
- Histogram and RGB analysis tools.
- Frameline & test signal generation. Two sets of adjustable framelines with masks, plus presets for 1.85, 2.40, 1.33.
- Frame capture and download to dpx file.
- Dpx file upload for use as reference frame.
- Automatic standard and framerate selection.
- Up to 4 processed 4:2:2 outputs and 1 unprocessed loop out.

